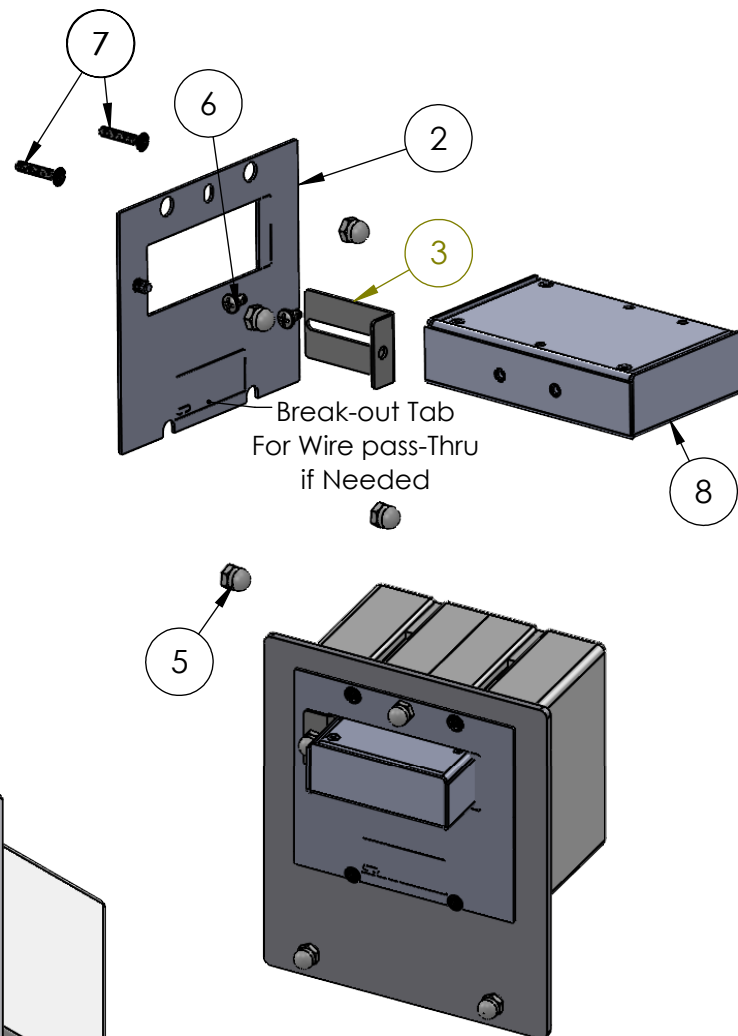
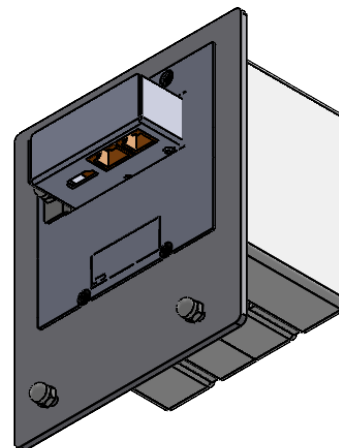
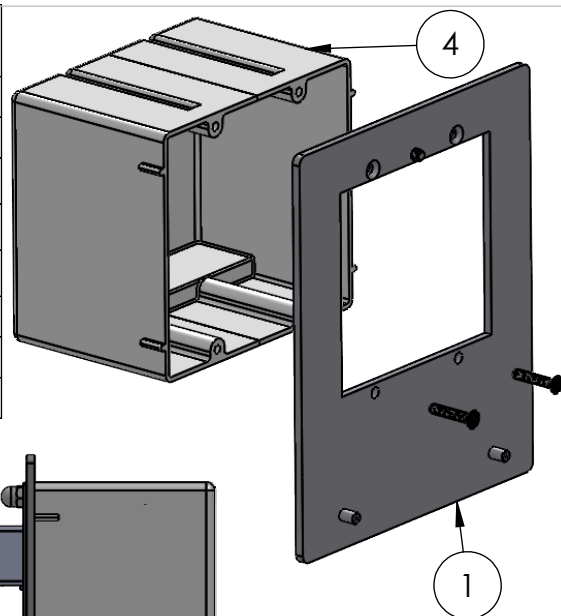
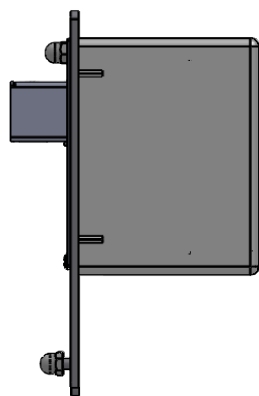
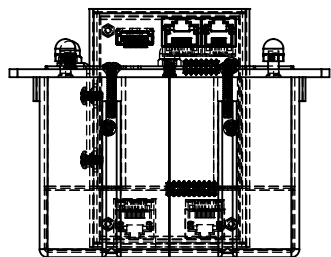
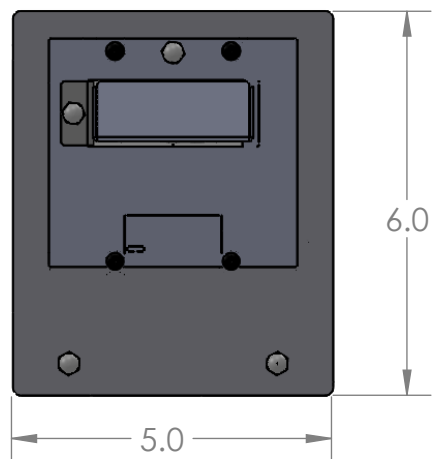


ITEM NO.	DESCRIPTION	QTY.
1	RC_CE WALL MOUNT PLATE	1
2	RC_CE WALL MOUNT Cover	1
3	Bracket- Mounting	1
4	2 Gang Wall Box	1
5	8-32 Cap Nut	4
6	PHPMS 6-32 X 1/4"	2
7	6-32x3/4" OHPMS Black Face	4
8	Camera End	1



- Step-1 Install Item #1 to Item #4 Wall Box with Item #7 Screws (4)
- Step-2 Attach Item #3 to Item #8 using Item #6 Screws (2)
- Step-3 Attach Step #2 Assembly to Item #2 with Item #5 Nut
- Step-4 Connect Ethernet Feed to Item #8
- Step-5 Hook bottom of Item #2 to lower Item #7(2) and Fasten with Item #5 Nut

PROPRIETARY AND CONFIDENTIAL

THE INFORMATION CONTAINED IN THIS
DRAWING IS THE SOLE PROPERTY OF
Sound Control Tech. ANY REPRODUCTION
IN PART OR AS A WHOLE
WITHOUT THE WRITTEN PERMISSION OF
Sound Control Tech. IS PROHIBITED.

SCT Sound Control Technologies
22 South Smith Street
Norwalk, CT 06855
(203) 854-5701
www.soundcontrol.net

TITLE:

Wall Mount

SIZE	DWG. NO.	REV
A	800-1102WEB	B