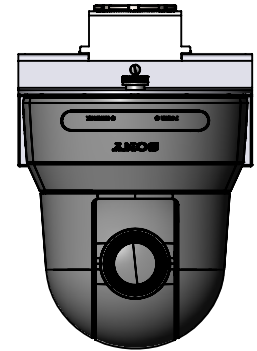
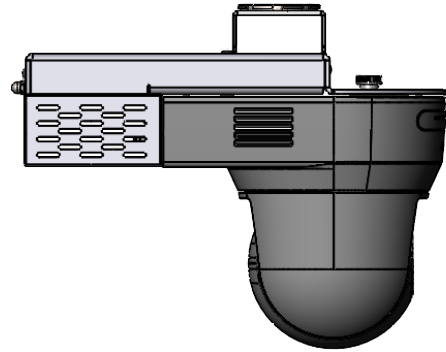
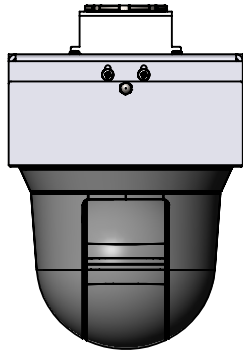
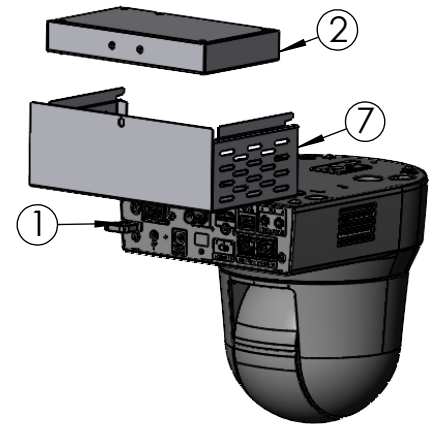
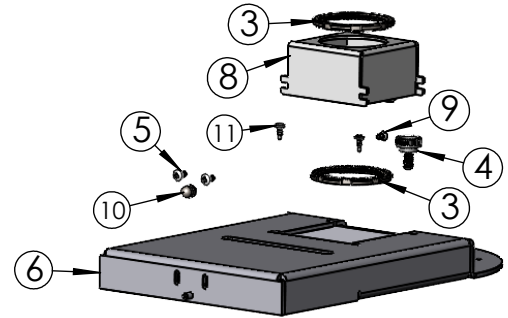
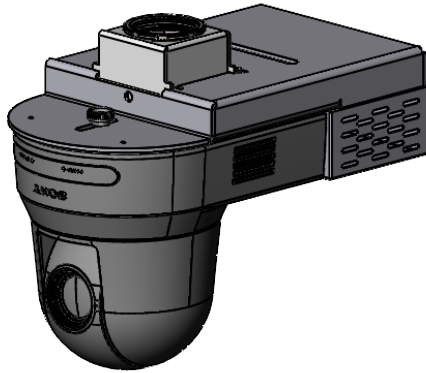


ITEM NO.	PART NUMBER	DESCRIPTION	QTY.
1	CAMERA	Camera PTZ Not Supplied	1
2	RC5+_TX	TX/CE Not Supplied	1
3	845-0013	1-1/2 NPSM Zinc-Plated Steel Locknut	2
4	860-0005	1/4"-20 Thumb Screw 18mm Head 1/2"Lg.	1
5	860-0034	Machine Screw 6-32x5/16" Truss Head Phillips White	2
6	817-1152	Pole Mount Inverted	1
7	818-1152	Inverted Pole Mount Cover	1
8	812-1152	Inverted Pole Mount Pole Bracket	1
9	860-0058	Machine Screw, 6-32x1/4", Oval Head, Slotted, White	1
10	850-0008	Cap Nut, 8-32, White	1
11	860-0050	Drilling Screw #6x3/8"Pan Head Phillips Zinc	2



**PROPRIETARY AND CONFIDENTIAL**  
THE INFORMATION CONTAINED IN THIS DRAWING IS THE SOLE PROPERTY OF Sound Control Tech. ANY REPRODUCTION IN PART OR AS A WHOLE WITHOUT THE WRITTEN PERMISSION OF Sound Control Tech. IS PROHIBITED.

DIMENSIONS ARE IN INCHES TOLERANCES: FRACTIONAL $\pm 1/32$ ANGULAR: MACH $\pm .5^\circ$ BEND $\pm 1^\circ$ TWO PLACE DECIMAL $\pm .02$ THREE PLACE DECIMAL $\pm .010$	
MATERIAL	.125 AL
FINISH	White
DO NOT SCALE DRAWING	

NAME	DATE
DRAWN G.E.G.	9/25/2024
CHECKED	
ENG APPR.	
MFG APPR.	
Q.A.	
COMMENTS:	

22 South Smith Street  
Norwalk, CT 06855  
(203) 854-5701  
[www.soundcontrol.net](http://www.soundcontrol.net)

## Inverted Pole Mount for PTZ

SIZE

A

DWG. NO.

800-1152-03

REV.

A

SCALE:3:16

WEIGHT:

SHEET 1 OF 1