

The **RCU2S-C30™** supports multiple camera models:

- Panasonic AW-HE20
- Panasonic AW-UE20
- Panasonic AW-UE40
- Panasonic AW-UE50

Shown: **Panasonic AW-UE20**

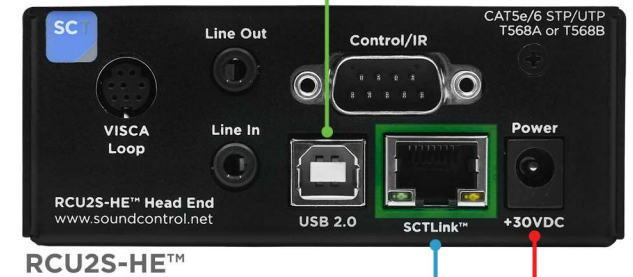


RCU2S-HE™ Front Panel
Field-Upgradeable microSD Slot

RCC-M004-1.0M
USB-B (RCU2S-HE™) to USB-A



Laptop



RCC-C029-0.3M
RJ11 (RCU2S-CE™) to DC Plug

RCC-M005-0.3M
USB-A (RCU2S-CE™) to USB-C



RCU2S-CE™

SCTLink™ Cable
Power, Control & Video
Refer to the RCU2S data sheet for cable specifications

WPS-12 30VDC
100-240V 47-63Hz
Power Supply



Module Dimensions

RCU2S-CE™: H: 0.789" (20mm) x W: 2.264" (57mm) x D: 3.725" (94mm)

RCU2S-HE™: H: 1.448" (36mm) x W: 3.814" (96mm) x D: 3.578" (90mm)