



The RCU2S-B2A8™ supports multiple camera models:

- AVer Cam 520 Pro & Pro 2
- AVer Cam 520 Pro Advanced
- AVer Cam 550
- AVer VB342 Pro
- AVer VC 520 Pro & Pro 2
- 1Beyond AutoFinder & AutoFramer
- Huddlecam HC12X-HUDDLEVIEW
- Huddlecam SIMPLTRACK LITE
- Huddlecam HC20X-SIMPLTRACK2 (shown)



RCU2S-HE™ Front Panel
Field-Upgradeable microSD Slot

RCC-M004-1.0M
USB-B (RCU2S-HE™)
to USB-A

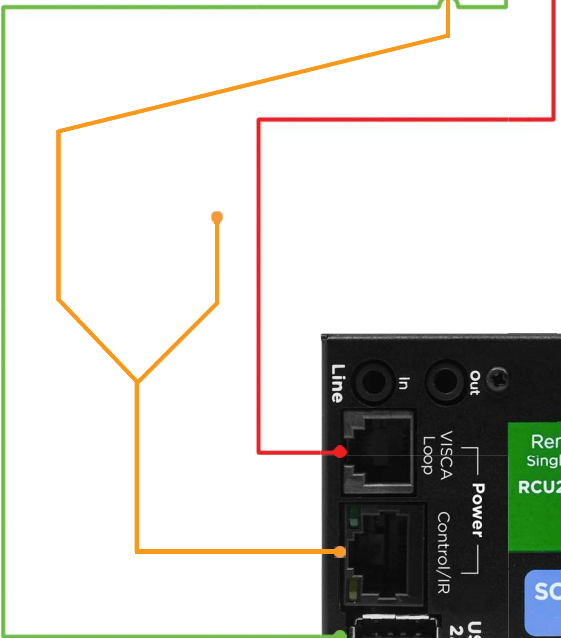


RCU2S-HE™

RCC-M004-0.3M
USB-A (RCU2S-CE™)
to USB-B

RCC-C005-0.3M
RJ45 (RCU2S-CE™)
to 8-Pin Mini (AVer COMPRO232)
to EIAJ-4 Barrel (Unused)

PPC-022-0.3M
RJ11 (RCU2S-CE™) to 5.5mm x 2.1mm Barrel

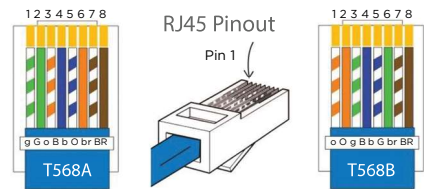


RCU2S-CE™

SCTLINK™ Cable
Power, Control & Video
The SCTLINK™ cable must always be a single, point-to-point CAT cable with no couplers or interconnections.

WPS-12 30VDC
100-240V 47-63Hz
Power Supply

SCTLINK™ Cable Specs
Integrator-Supplied CAT5e/CAT6 STP/UTP Cable
T568A or T568B (100m Max Length)



Module Dimensions
RCU2S-CE™: H: 0.789" (20mm) x W: 2.264" (57mm) x D: 3.725" (94mm)
RCU2S-HE™: H: 1.448" (36mm) x W: 3.814" (96mm) x D: 3.578" (90mm)