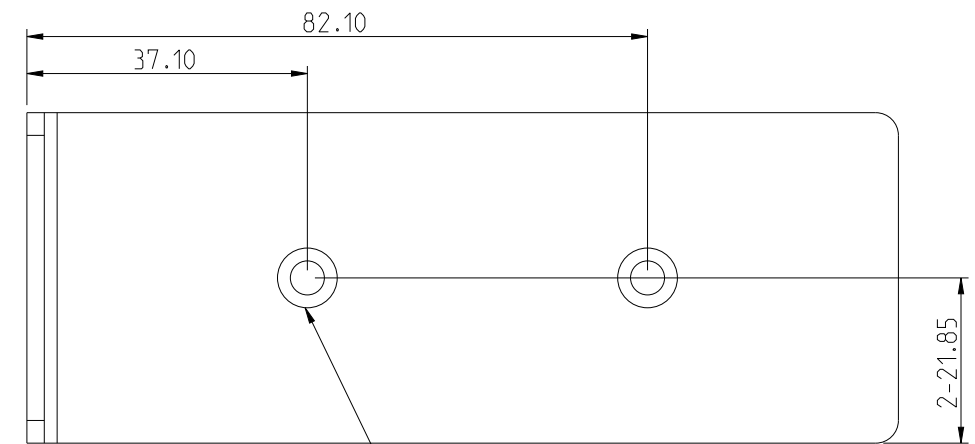
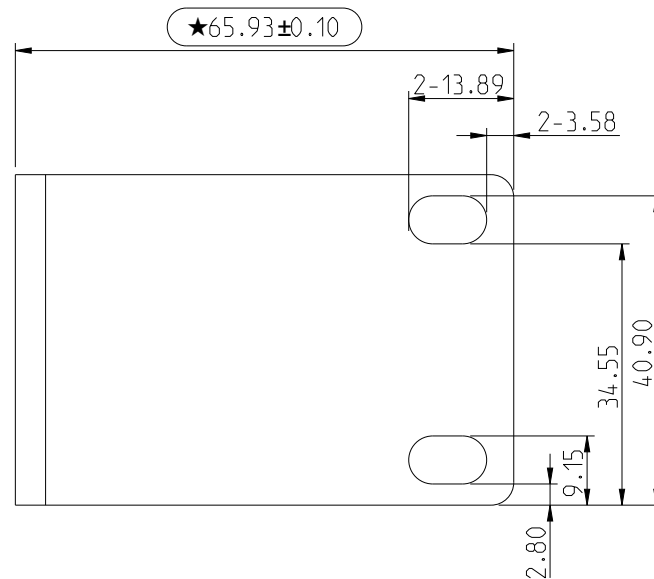
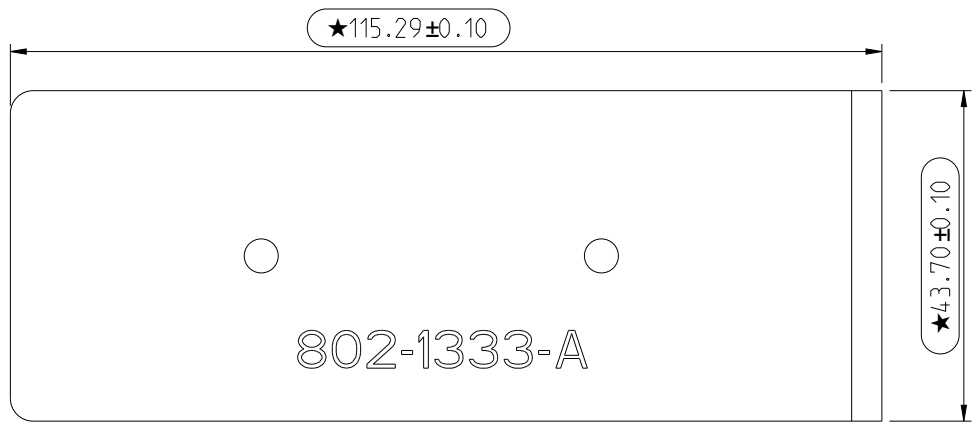
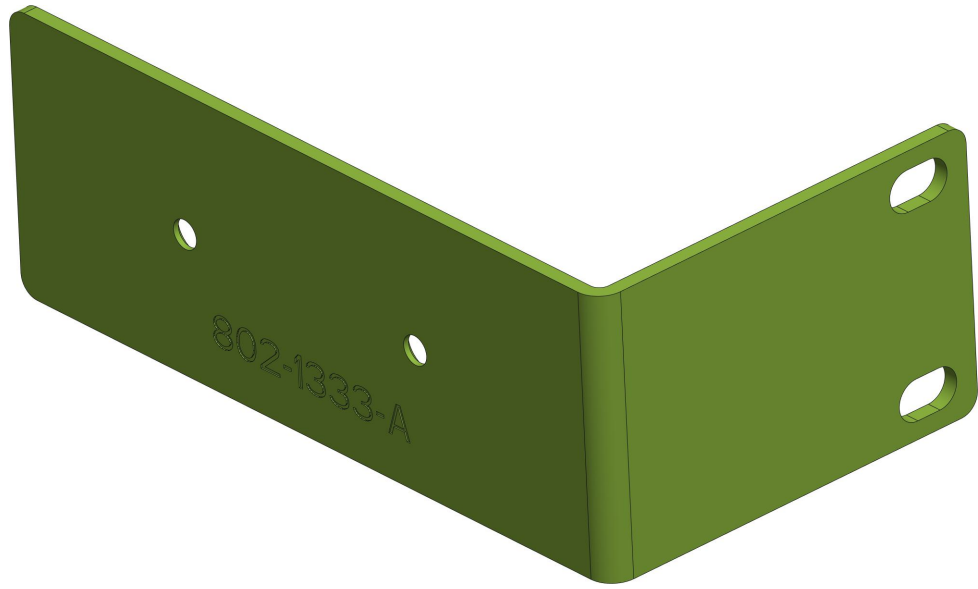


| REVISIONS |             |      |          |
|-----------|-------------|------|----------|
| REV.      | DESCRIPTION | DATE | APPROVED |
|           |             |      |          |
|           |             |      |          |



2 holes matched with #8-32 Flat screw

- Note:
1. Not allowed burr and sharp edges
  2. All the round corner not marked in the drawing should be at least R0.5.
  3. Even the dimensions not marked in the 2D drawing, should follow the 3D design and the tolerance.
  4.  $\bigcirc$ ★ means critical dimensions.

PROPRIETARY AND CONFIDENTIAL  
 THE INFORMATION CONTAINED IN THIS DRAWING IS THE SOLE PROPERTY OF SOUND CONTROL TECH.  
 ANY REPRODUCTION IN PART OR AS A WHOLE WITHOUT THE WRITTEN PERMISSION OF SOUND CONTROL TECH IS PROHIBITED.

| Tolerance (mm) |       |
|----------------|-------|
| 0-30           | ±0.1  |
| 30-120         | ±0.15 |
| 120-315        | ±0.2  |
| 315-1000       | ±0.3  |

|           | NAME     | DATE     |
|-----------|----------|----------|
| DRAWN     | Ann Chin | 24/08/08 |
| CHECKED   |          |          |
| ENG APPR. |          |          |
| MFG APPR. |          |          |
| Q.A.      |          |          |
| COMMENTS: |          |          |

|  |                         |            |
|--|-------------------------|------------|
| Sound Control Technologies                     |                         |            |
| TITLE:<br>Universal Rack Mount L-Bracket, 2.6" |                         |            |
| SIZE   | DWG. NO.ENC-RKPA-0002-0 | REV        |
| A3   | 802-1333                | A          |
| SCALE: 1:1                                     |                         | SHEET 1 OF |